

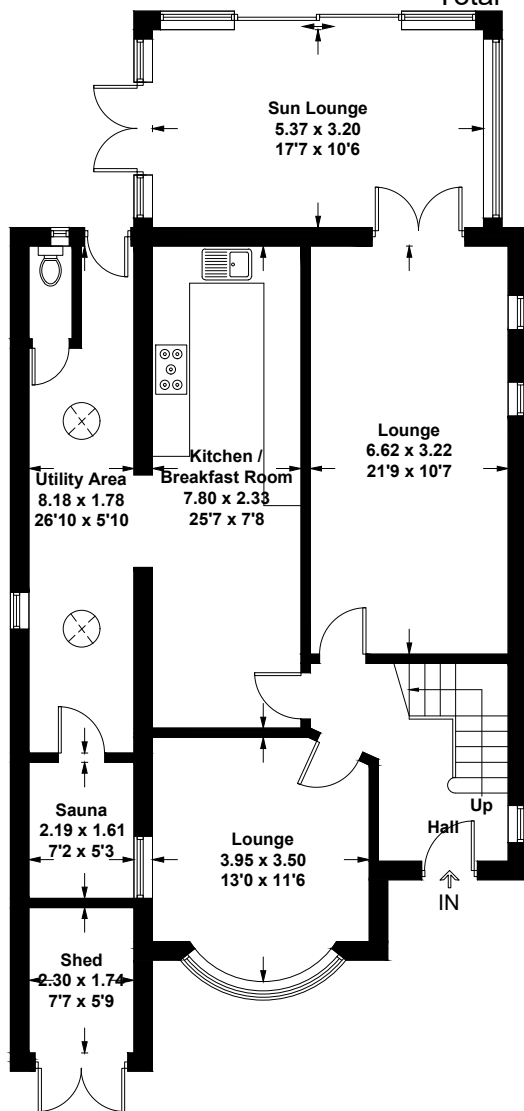
Crabwood Road, Southampton

Approximate Gross Internal Area = 158.4 sq m / 1705 sq ft

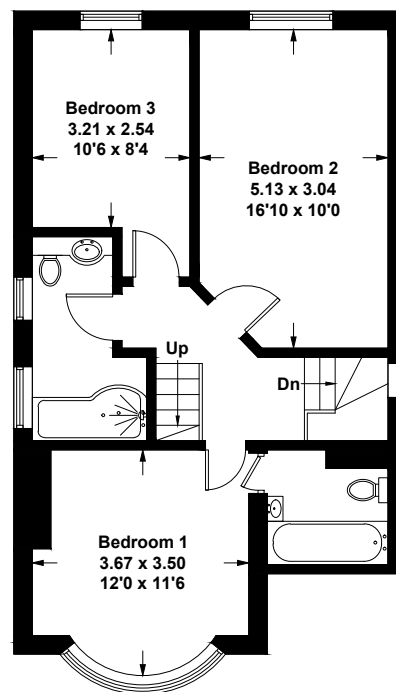
Attic = 17.1 sq m / 184 sq ft

Shed = 4.2 sq m / 45 sq ft

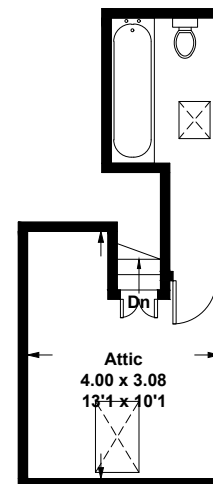
Total = 179.7 sq m / 1934 sq ft



Ground Floor



First Floor



Attic

Illustration for identification purposes only, measurements are approximate, not to scale. floorplansUsketch.com © (ID712728)